



Lakewood Office Building

9119 Gravelly Lake Dr SW, Lakewood

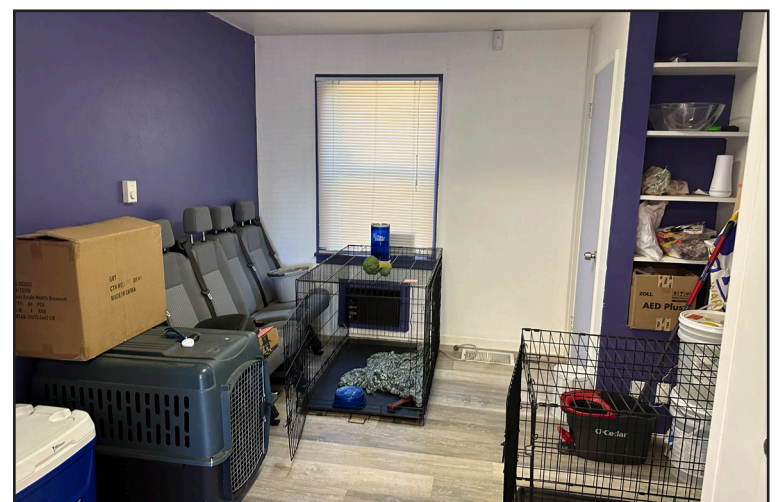
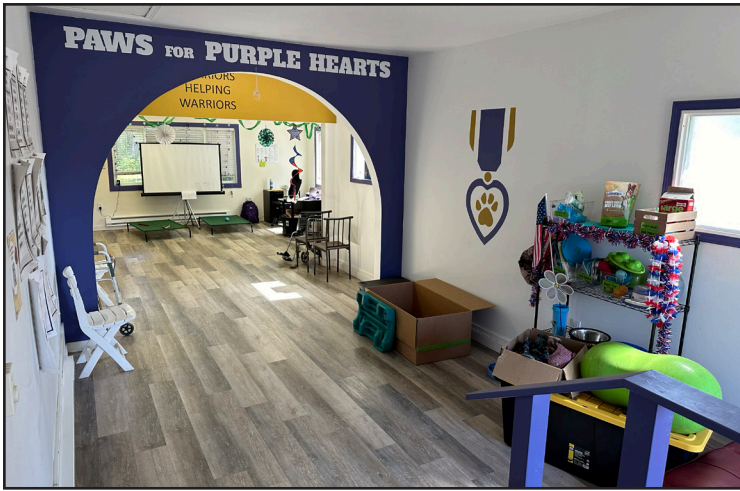
The Lakewood Office Building is 1,612sf of standalone office or retail building with a fenced yard in Lakewood's Central Business District. The neighborhood is a combination of commercial and residential, with sidewalks and excellent traffic counts. The building offers a wheel chair accessible ramp and restroom, three rooms, a charming kitchen with built-in cabinets, and a large reception area. The basement provides additional storage space. A private parking lot is in the front of the building, and there is potential for more parking in the back. Recent upgrades include luxury vinyl plank flooring.

Property Overview

- Storefront glass doors
- Large reception area
- Three rooms including private office
- ADA accessible
- Asphalt parking lot
- Rear yard with potential for additional parking
- High traffic counts (15,554 CPD)
- Luxury vinyl plank flooring
- Available space: 1,612sf
- Asking rate: \$20/sf/yr plus NNN

DISCLAIMER: The above information has been secured from sources believed to be reliable, however, no representations are made to its accuracy. Prospective tenants or buyers should consult their professional advisors and conduct their own independent investigation. Properties are subject to change in price and/or availability without notice.





11120 Gravelly Lake Dr SW Ste 2
Lakewood, Washington 98499
johnson-commercial.com

Margot Johnson
margot@johnson-commercial.com
(253) 209-9998

